

SKF Bearing Grease

Biodegradable bearing grease

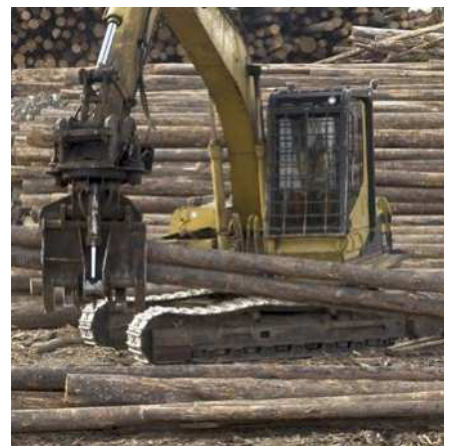
LGGB 2

SKF LGGB 2 is a biodegradable, low toxicity, synthetic ester oil based grease, using a lithium-calcium thickener. Its special formulation makes it most suitable for applications where environmental contamination is a concern.

- Good performance in applications with steel-on-steel spherical plain bearings, ball bearings and roller bearings
- Good low temperature start-up performance
- Good corrosion inhibiting properties
- Suitable for medium to high loads

Typical applications

- Agricultural and forestry equipment
- Construction and earthmoving equipment
- Mining and conveying equipment
- Water treatment and irrigation
- Locks, dams, bridges
- Linkages, rod ends



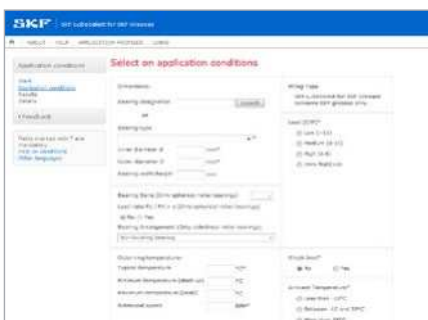
Available pack sizes

Packsizes	Designation
420 ml cartridge	LGGB 2/0.4
5 kg can	LGGB 2/5
18 kg pail	LGGB 2/18
Gas driven lubricator	
LAGD series 125 ml	LAGD 125/GB2



Technical data			
Designation	LGGB 2/(pack size)		
ISO 12924 code	ISO 12924 ISO-L-XD(L)CEB 2	Corrosion protection Emcor: – standard ISO 11007 – water washout test – salt water test (0.5% NaCl)	0–0 0–0 0–0
NLGI consistency class	2	Water resistance DIN 51 807/1, 3 hrs at 90 °C	1
Thickener	Lithium/calcium	Copper corrosion DIN 51811 / ASTM D4048, 24 hrs at 100 °C (210 °F)	2 max.
Colour	Light brown	Oil separation DIN 51 817, 7 days at 40 °C, static, %	1–3
Base oil type	Ester	Lubrication ability R2F, running test B at 120 °C	Pass at 90 °C (195 °F)
Operating temperature range	–40 to +90 °C (–40 to +195 °F)	Rolling bearing grease life R0F test L ₅₀ life at 10 000 r/min., hrs	1000 at 90 °C (195 °F)
Dropping point DIN ISO 2176	>165 °C (>330 °F)	EP performance Wear scar DIN 51350/5, 1 400 N, mm 4–ball test, welding load DIN 51350/4, N	1.8 max. 2 600 min.
Base oil viscosity 40 °C, mm ² /s 100 °C, mm ² /s	110 18	Shelf life	2 years
Penetration DIN ISO 2137 60 strokes, 10 ⁻¹ mm 100 000 strokes, 10 ⁻¹ mm	265–295 +50 max.		
Mechanical stability Roll stability, 50 hrs at 80 °C, 10 ⁻¹ mm	+70 max.		

These characteristics represent typical values.



Advanced tool for grease selection and relubrication calculation

LubeSelect for SKF greases

Selecting a suitable grease for a particular bearing is a crucial step if the bearing is to meet design expectations in its application. SKF knowledge about bearing lubrication has been encapsulated into a computer program that can be consulted at skf.com/lubeselect

LubeSelect for SKF greases provides you a user friendly tool to select the right grease and suggest frequency and quantity, while taking into account the particular conditions of your application. General guidelines for typical greases for different applications are also available.



Scan or click the QR code, or go to skf.com/lubeselect

skf.com | skf.com/lubrication | skf.com/mapro

* SKF is a registered trademark of AB SKF (publ).

© SKF Group 2024. All rights reserved. Please note that this publication may not be copied or distributed, in whole or in part, unless prior written permission is granted.

Every care has been taken to ensure the accuracy of the information contained in this publication, but no liability can be accepted for any loss or damage whether direct, indirect or consequential arising out of the use of the information contained herein.

PUB MP/P8 12049/4 EN · March 2024

Certain image(s) used under license from Shutterstock.com.