

CR Unitized pinion seal

The SKF unitized pinion seals offer the optimum sealing performance with extended life. The superior design provides a perfectly matched running surface for the sealing lips made from highly engineered fluoroelastomer. High temperature capable with extensive exclusion properties provides long life in a highly aggressive application. The unitized design incorporates the patented Waveseal that sweeps lubricant back to the bearings promoting cooler running operation. Another innovative feature of this seal adding long life is the 1/2 metal, 1/2 rubber ID allows for heat dissipation while holding a positive grip on the shaft.



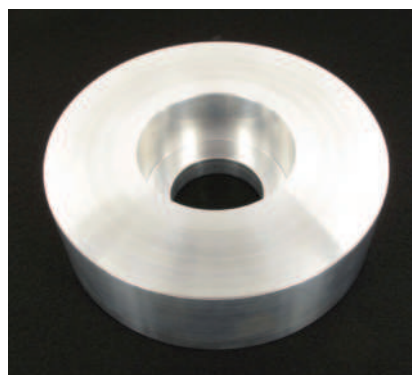
Features

- Fluoroelastomer sealing lip handles the high temperatures of the pinion application
- Patented Waveseal design allows seal to run cooler/sweeps oil back to bearings
- 1/2 Rubber and 1/2 Metal ID - Rubber maintains positive grip and prevents leak path; Metal allows heat dissipation
- Sealant across the Bore Tite OD provides sealant eliminating leak paths
- Thermoplastic bumper ensures proper seal position during installation

Benefits

- Wear sleeve contained within seal providing optimal sealing interface
- Protects yoke surface from wear and grooving caused by seal lip contact
- One piece installation eliminates need to stock or install wear sleeve
- Internal labyrinth design with multiple dirt lips prevents ingress of contamination

PT6000 tool installs all CR unitized pinion seals



Follow SKF Automotive Social Channels



[SKFAutomotive](#)



[skfautomotive](#)



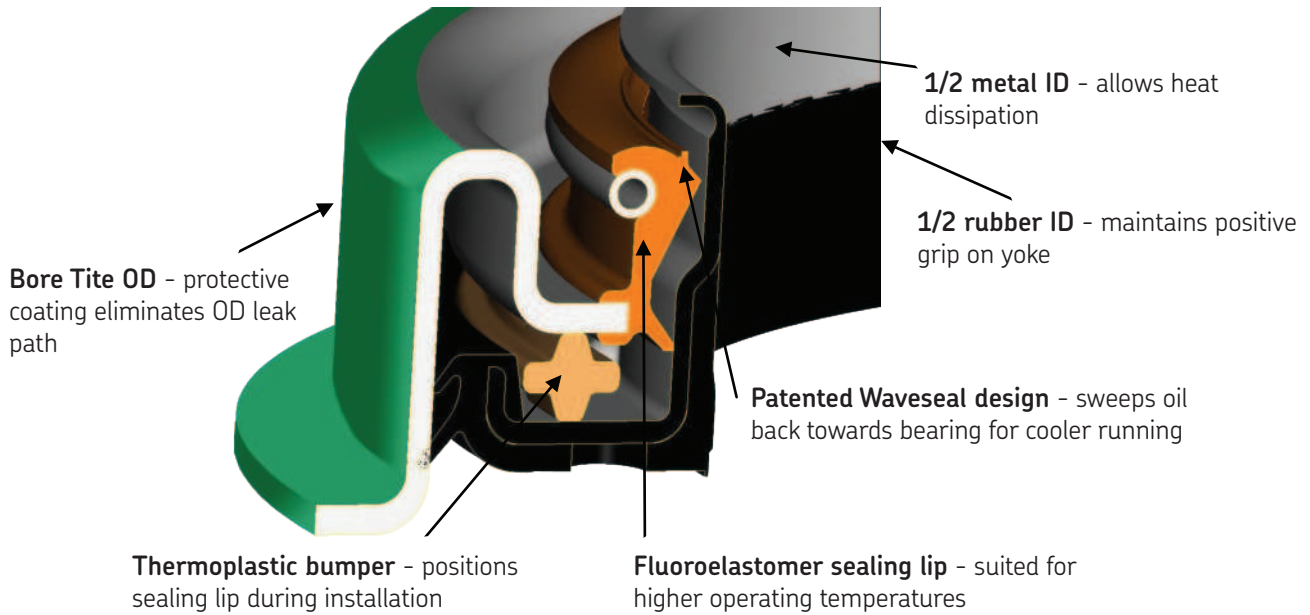
[@skfpartsinfo](#)



[www.skfpartsinfo.tv](#)

SKF Vehicle Aftermarket
890 Forty Foot Road
Lansdale, PA 19446
800-882-0008

[www.vehicleaftermarket.skf.com](#)



Interchanges and specifications

CR unitized	Axles	Position	Arvin Meritor No.	National No.	Stemco No.	CR DL	CR Grease	Bore	Yoke shaft
32500	14X/16X/18X/38X	F-R UI (FUI) ¹	A1205R2592/ A11205X2728	100494	429-0007	32410	32397	4.249	3.250
30008	14X/16X	F-R UO (FUO) ²	A1205P2590/ A11205Y2729	100495	429-0005	30007	29867	3.751	3.000
30009	14X	R-R UI (RUI) ³	A1205N2588/ A11205Z2730	100263	429-0010	30153	30145	4.936	3.000
32503	16X/18X	R-R UI (RUI) ³	A1205Q2591/ A11205A2731	100557	429-0011	33254	—	5.501	3.250

1 - F-R UI - Forward-Rear Unit Input (FUI) 2 - F-R UO - Forward-Rear Unit Output (FUO) 3 - R-R UI - Rear-Rear Unit Input (RUI)