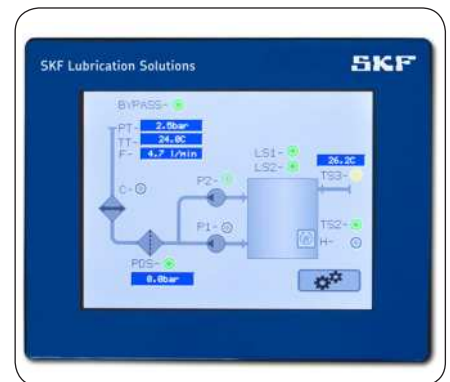


SKF lubrication control centre ST-2240-CIRC

for oil circulation



The new SKF Control Centre ST-2240-CIRC controls oil circulation lubrication systems and SKF Flowline oil flowmeters. Electronics and software for this unit are specially designed for lubrication systems and can be configured for existing systems in controller and monitoring upgrades. The unit's touch screen has many state-of-the-art features such as cold system start-up logic and remote access with smartphones. This new SKF Control Centre offers a modern, flexible and cost effective solution to control and monitor a large range of oil circulation systems.



User interface

- 5,7" touch screen color display
- USB-port for log and trend memory
- Ethernet port for remote control

Historical trend features

ST-2240-CIRC collects continuous trends of:

- Output oil pressure
- Output oil temperature
- Total oil flow
(if Flowline monitors are in use)
- Pressure loss in filter
(if Δp transmitter is in use)

Trends and log files of alarms are available as files in USB memory. Also log files of user's actions are recorded in to USB memory. Historical information can be read from USB memory in .csv-format.

Remote control

ST-2240-CIRC includes Ethernet port and free web server for remote control and monitoring by web browser.

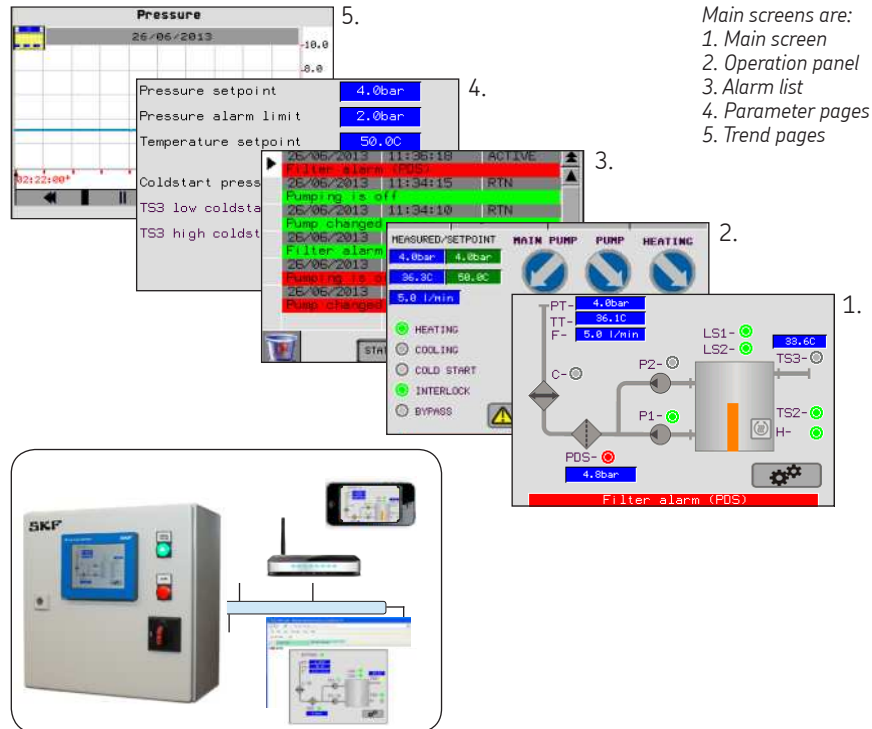
An App for Android and iPhone/iPad is available for smart phones and tablets for remote control by WiFi.

Remote control gives the user the same functionality as the local display.

Files in USB memory are accessible by web browser.

SKF lubrication systems

e-mail: skf-lube@skf.com



Main screens are:
1. Main screen
2. Operation panel
3. Alarm list
4. Parameter pages
5. Trend pages



Technical specification

Case	380 x 380 x 210 mm (w x h x d), painted RAL 7035
Protection class	IP 65
Power supply	93...132 VAC/5.4 A, 186...264 VAC/2.2 A, 47...63 Hz
Instrument power supply	Internal power supply 24 V DC/10 A
Control unit	SKF ST-105 lubrication controller 2 Modbus ports for VFD and display communication RS232/CAN interface for Flowline monitor communication 4 analog/digital inputs 4...20 mA 6 digital inputs 10 mA 8 digital outputs 24 V/2 A 2 relay outputs for alarm and interlocking
Display	Schneider HMISTU855 5,7" TFT touch screen , 320x240, 64k colors Ethernet and USB port

Control features

- Control for one or two pumps
– automatic and manual pump change
- Variable frequency drive (VFD) motors for pressure control
- Oil temperature adjustment with air or water cooler
- Oil reservoir heating control
- Automatic cold start-up mode
– automatic cold start pressure control by return oil temperature
– By-pass valve control
- Alarms
- Machine interlocking

Monitoring and online displays

- Oil pressure
- Oil temperature
- Total oil flow
- Filter pressure loss
- Return oil temperature
- Tank oil level

Alarms

- Low pressure in oil pressure line
- Automatic pump change
- Filter pressure loss
- Tank low oil level
- Self-diagnosing of the control

Parameters

- Pressure set point
- Temperature set point
- Low pressure alarm limit
- Automatic cold start-up parameters:
– Start return oil temperature
– Final return oil temperature
– Start-up pressure
- Function and alarm delays
- Selection of control options

© SKF is a registered trademark of the SKF Group

© SKF Group 2013

The contents of this publication are the copyright of the publisher and may not be reproduced (even extracts) unless permission is granted. Every care has been taken to ensure the accuracy of the information contained in this publication but no liability can be accepted for any loss or damage whether direct, indirect or consequential arising out of the use of the information contained herein.

PUB LS/P8 14257 EN · November 2013

