

SKF Bearing Grease

General purpose, high load bearing grease

LGNL 3

SKF LGNL 3 is a premium general purpose NLGI 3 grease based on a mineral oil with a calcium complex soap.

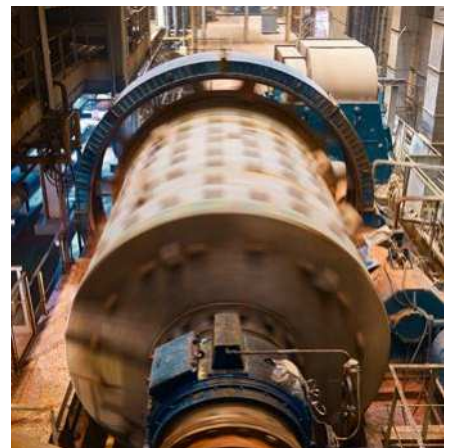
Versatile and designed for a wide variety operating conditions, LGNL 3 ensures optimal performance in many applications, including vertical shafts and applications exposed to high vibrations, aiming to extend equipment life and reducing maintenance costs.

This general purpose wide applications grease is an effective alternative to traditional general purpose lithium based greases.

- Excellent load carrying capabilities
- High performance
- Wide temperature range
- Extended relubrication intervals

Typical applications

- Vertical shaft applications
- High load applications
- Vibrating conditions
- Pumps and fans
- Car, truck and trailer wheel bearings
- Mills and crushers



Available pack sizes

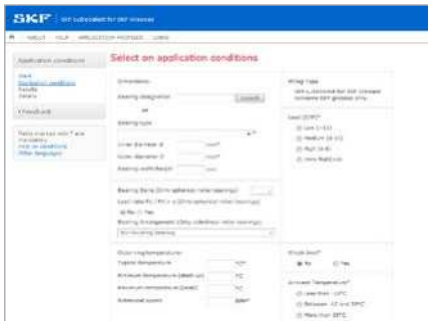
Packsizes	Designation
1 kg can	LGNL 3/1
18 kg pail	LGNL 3/18
180 kg drum	LGNL 3/180



Technical data

Designation	LGNL 3/(pack size)		
DIN 51825 code	KP3K-30	Corrosion protection	
NLGI consistency class	3	Emcor:	
Thickener	Calcium complex	– standard ISO 11007	0–0
Colour	Amber	– water washout test	0–0
Base oil type	Mineral oil	Water resistance	
Operating temperature range	–30 to +130 °C (–22 to +266 °F)	DIN 51 807/1, 3 hrs at 90 °C	2 max.
Dropping point DIN ISO 2176	190 °C min. (374 °F min.)	Oil separation	
Base oil viscosity		DIN 51 817, 7 days at 60 °C, static %	1–3
40 °C, mm ² /s	105	Lubrication ability	
100 °C, mm ² /s	10	R2F, running test B	Pass at 140 °C (284 °F)
Penetration DIN ISO 2137		Copper corrosion	
60 strokes, 10 ⁻¹ mm	220–250	DIN 51 811	2 max. at 130 °C (266 °F)
100 000 strokes, 10 ⁻¹ mm	+50	Rolling bearing grease life	
Mechanical stability		R0F test, L50 life at 10 000 r/min., hrs	1 000 min. at 130 °C (266 °F)
Roll stability, 50 hrs at 80 °C, 10 ⁻¹ mm	+50	EP performance	
V2F test	'M'	Wear scar DIN 51350/5, 1 400 N, mm	2 max
		4-ball test, welding load	2 800 min.
		DIN 51350/4. N	
		Shelf life	5 years

These characteristics represent typical values.



Advanced tool for grease selection and relubrication calculation

LubeSelect for SKF greases

Selecting a suitable grease for a particular bearing is a crucial step if the bearing is to meet design expectations in its application. SKF knowledge about bearing lubrication has been encapsulated into a computer program that can be consulted at skf.com/lubeselect

LubeSelect for SKF greases provides you a user friendly tool to select the right grease and suggest frequency and quantity, while taking into account the particular conditions of your application. General guidelines for typical greases for different applications are also available.



Scan or click the QR code, or go to skf.com/lubeselect

skf.com | skf.com/lubrication | skf.com/mapro

© SKF is a registered trademark of AB SKF (publ).

© SKF Group 2024. All rights reserved. Please note that this publication may not be copied or distributed, in whole or in part, unless prior written permission is granted.

Every care has been taken to ensure the accuracy of the information contained in this publication, but no liability can be accepted for any loss or damage whether direct, indirect or consequential arising out of the use of the information contained herein.

PUB MP/P8 19788 EN · January 2024

Certain image(s) used under license from Shutterstock.com.