

## TFW

The TFW axial shaft seal is commonly used on the back-up rolls of hot and cold rolling mills.

As visible in the image at the right-hand side, the seal needs to be bolted into its position, acting as a first barrier against water, improving the overall sealing system.

The TFW seal features a treated iron insert, completely covered by rubber. The TFW is suitable to be mounted in open housing bores.



Being firmly tightened onto the seal end plate by means of bolts, the TFW seal enables stability and a reliable sealing performance, whilst a slot at the 6 o'clock position allows water to flow out of the sealing system.

The TFW seal features a particularly flexible sealing lip capable of following axial displacements of up to  $\pm 12,5$  mm in a very rigid body, which does not deform under pressure of the seal inner ring. Thanks to the two O-rings placed under the flange, also the static sealing effect is provided.

Exclusive features of TFW seals are:

- Mountable in open housings via bolts
- Increased stiffness due to metal insert fully covered by rubber and consequent prevention of damages to the contact surfaces
- Improved capability to follow axial displacement up to  $\pm 12,5$  mm
- Improved static sealing functionality due to the two integrated O-rings

Possible size range for TFW seals:  $\varnothing d_{\min} = 30$  mm;  $\varnothing D_{\max} = 2\ 300$  mm (please also see the drawing at the next page)

## Materials

The standard material for the TFW seal is a nitrile elastomer (NBR), but it is also available as hydrogenated nitrile elastomer (HNBR) or fluorocarbon elastomer (FKM) on request.

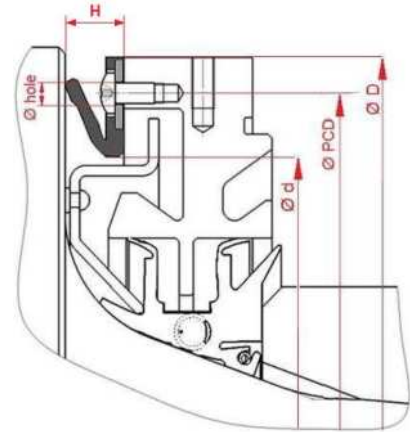
The table below shows working temperature ranges (minimum, maximum, peak (\*)) applicable to each type of compound as well as possible spring configurations.

Material	Temperature		Recommended circumferential shaft speed
	min	max	
	°C	°C (*)	m/s
<b>NBR</b>	-30	+100 (+120)	20
<b>HNBR</b>	-40	+150 (+175)	30
<b>FKM</b>	-20	+200 (+250)	30

## Assembly of TFW seals

The drawing shows the details of the housing dimensions and the assembly of the TFW seal.

Particular applications or requirements different from those details shall be agreed with the TENUTE Technical Department / SKF Seals Application Engineering.



## Metal parts surface finishing

Axial shaft seals can work in contact with Ra values ranging from 0,8 to 1,6  $\mu\text{m}$ . Nevertheless, in applications with high circumferential speed or particular fluids, lower values are required. Please align and agree those values with the TENUTE Technical Department / SKF Seals Application Engineering. For an accurate match of holes and screws a check of holes positions and their distance on the wheelbase diameter of the TFW seal is recommended. The image above shows the two important parameters for a proper assembly of the TFW seal –  $\varnothing$  PCD (Pitch circle diameter = diameter of the circle passing through the centre of all the fixing screws) and  $\varnothing$  hole.

## Seal counterface hardness

For the sealing counterface a hardness of 50 HRC or above is recommended.

[skf.com](https://skf.com) | [skf.com/seals](https://skf.com/seals)

® SKF and TENUTE are registered trademarks of the SKF Group  
© SKF Group 2024

The contents of this publication are the copyright of the publisher and may not be reproduced (even extracts) unless prior written permission is granted. Every care has been taken to ensure the accuracy of the information contained in this publication, but no liability can be accepted for any loss or damage whether direct, indirect, or consequential arising out of the use of the information contained herein. All data mentioned in this publication are given as an indication. SKF Seals Application Engineering / TENUTE Technical Department reserves the right to change and improve its products according to application specifications and test results.