

# SKF @ptitude Analyst Thin Client Transfer dBX

User Manual

Part Number **15V-090-00099-100**

Revision **B – February 2024**



Read this manual carefully before using the product. Failure to follow the instructions and safety precautions in this manual can result in serious injury, damage to the product or incorrect readings. Keep this manual in a safe location for future reference.

Copyright © 2023 by SKF Group  
All rights reserved.

SKF Sverige AB  
Ålgatan 10D, 973 34 Luleå, Sweden  
Telephone: +46 (0) 31 337 10 00



® SKF is a registered trademark of the SKF Group.

All other trademarks are the property of their respective owners.

The contents of this publication are the copyright of the publisher and may not be reproduced (even extracts) unless prior written permission is granted. Every care has been taken to ensure the accuracy of the information contained in this publication, but no liability can be accepted for any loss or damage whether direct, indirect or consequential arising out of the use of the information contained herein. SKF reserves the right to alter any part of this publication without prior notice.

### **General Product Information**

General information such as datasheets and catalogues are published on the [Condition Monitoring Systems](#) site on SKF.com. Supporting product information can also be downloaded from the [SKF Technical Support](#) self-service web portal.

### **Product Support Contact Information**

***Product Sales*** – For information on purchasing condition monitoring products, services and support on products out of warranty, please contact your [local SKF sales office](#) or [distributor](#).

***How to request Technical Support*** – Please open a support case using the Technical Support group's self-help portal at [www.skf.com/cm/tsg](http://www.skf.com/cm/tsg). Once your support case is submitted, a technician will contact you to begin working on your issue. For urgent issues we are available at these times:

- Monday through Friday, 5:00 a.m. to 4:00 p.m. Pacific Time  
Phone: +1 800 523 7514 within the US or +1 858 496 3627 outside the US.
- Monday through Friday, 8:00 a.m. to 4:00 p.m. Central European Time  
Phone: +46 31 337 65 00.
- Monday through Friday, 7:30 a.m. to 4.30 p.m. India Standard Time  
Phone: +60 16 699 9506.

## Table of contents

<b>1</b>	<b>Product description .....</b>	<b>5</b>
1.1	Introduction .....	5
1.2	Launching @ptitude Analyst TCTdBX.....	5
1.3	Manage connections.....	8
1.4	Preferences.....	9
1.5	Hierarchy selection .....	10
<b>2</b>	<b>Direct database communication.....</b>	<b>11</b>
2.1	Overview .....	11
2.2	TCTdBX Database Communication on a Microlog Analyzer dBX .....	12
2.2.1	Download to a Microlog Analyzer dBX (DAD) .....	13
2.2.2	Upload from Microlog Analyzer dBX (DAD).....	15
2.2.3	Status .....	17
<b>3</b>	<b>File transfer.....</b>	<b>19</b>
3.1	Overview .....	19
3.2	File transfer to / from @ptitude Analyst database – File <--> DB .....	20
3.2.1	Generate download file .....	20
3.2.2	Import upload files.....	21
3.3	File transfer to / from Microlog Analyzer dBX – DBX <- - > File.....	23
3.3.1	Download to Microlog Analyzer dBX (DAD) .....	23
3.3.2	Upload from Microlog Analyzer dBX (DAD).....	24
3.3.3	Status .....	25
	<b>Appendix A .....</b>	<b>27</b>
	End-User License Agreement .....	27
	<b>Appendix B .....</b>	<b>38</b>
	<b>Configuration file and Command Line parameters.....</b>	<b>38</b>



# 1 Product description

## 1.1 Introduction

SKF @ptitude Analyst Thin Client Transfer dBX (TCTdBX) is a mandatory application used to configure the Microlog Analyzer dBX and store data to @ptitude Analyst. TCTdBX is a small application that deploys very easily without using the @ptitude Analyst interface.

TCTdBX is compatible with platforms that support @ptitude Analyst v9 MR3.

TCTdBX has one mode of communication:

**Direct communication with an @ptitude Analyst database** – This method communicates with SKF @ptitude Analyst Transaction Server to transfer data directly to / from the @ptitude Analyst database, bypassing the @ptitude Analyst application interface.

## 1.2 Launching @ptitude Analyst TCTdBX

When SKF @ptitude Analyst TCTdBX is installed, it creates a shortcut in the SKF @ptitude Monitoring Suite software group.

**To launch TCTdBX:**

1. From the Windows **Start** menu, select the **SKF @ptitude Monitoring Suite** group.
2. Select **SKF @ptitude Analyst TCTdBX**.

At any time TCTdBX is started, if a connection to the Transaction Service cannot be established, a dialogue prompting you to specify the computer name and port for the Transaction Server will appear. For more information, see section [Manage connections](#).

Once connection with the Transaction Server has been established, the user is presented with the login dialogue.

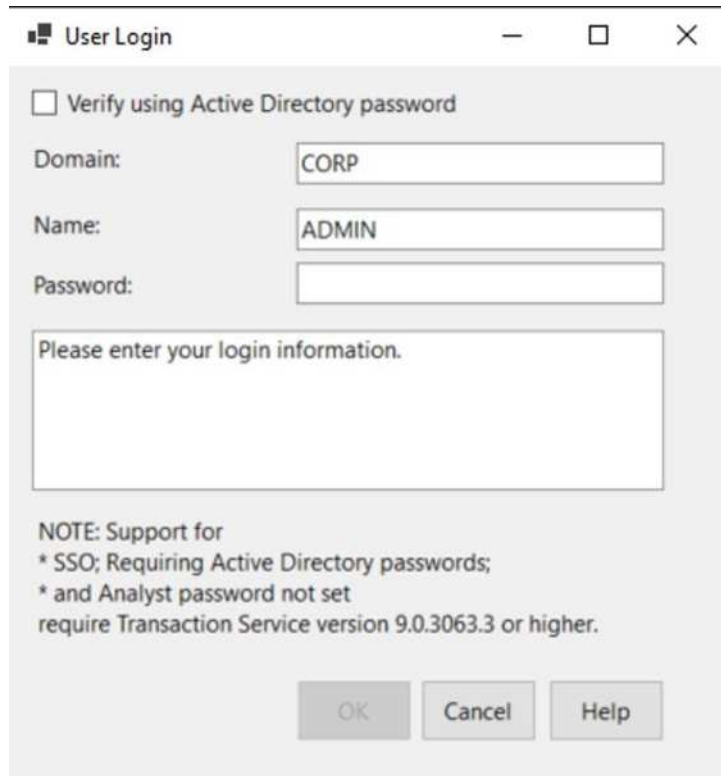


Figure 1 TCTdBX User login

TCTdBX login uses the same user accounts as @ptitude Analyst login.

- **Verify using Active Directory password** – Select to use the Active Directory credentials.
- Enter the appropriate username and password and click **OK** to launch the application.

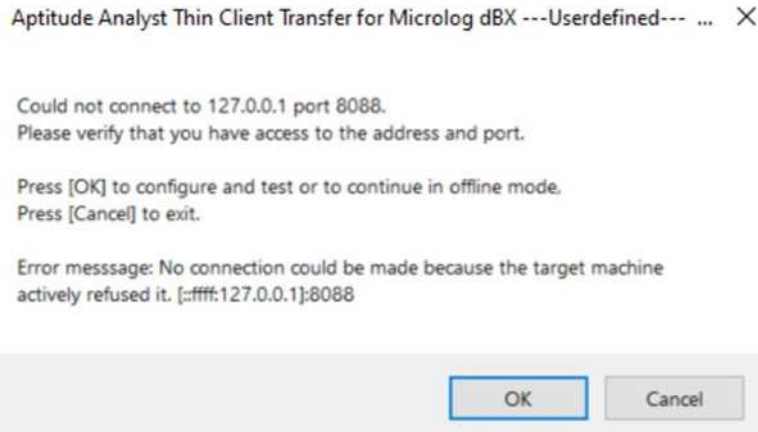
**When TCTdBX is run for the first time** – Specify the IP Address/device name and port for the Transaction Server used for communication with @ptitude Analyst.

- To find the IP Address for the Transaction Server, from the Windows **Start** menu, open **Command Prompt**, type "ipconfig", and press **Enter**.  
 If the Transaction Server is running on the same computer, then you can use "localhost" or "127.0.0.1" for the IP Address.
- To find the device name select **This PC > Devices and drivers**.
- To find the computer name, from the Windows **Start** menu, select **PC Info**.

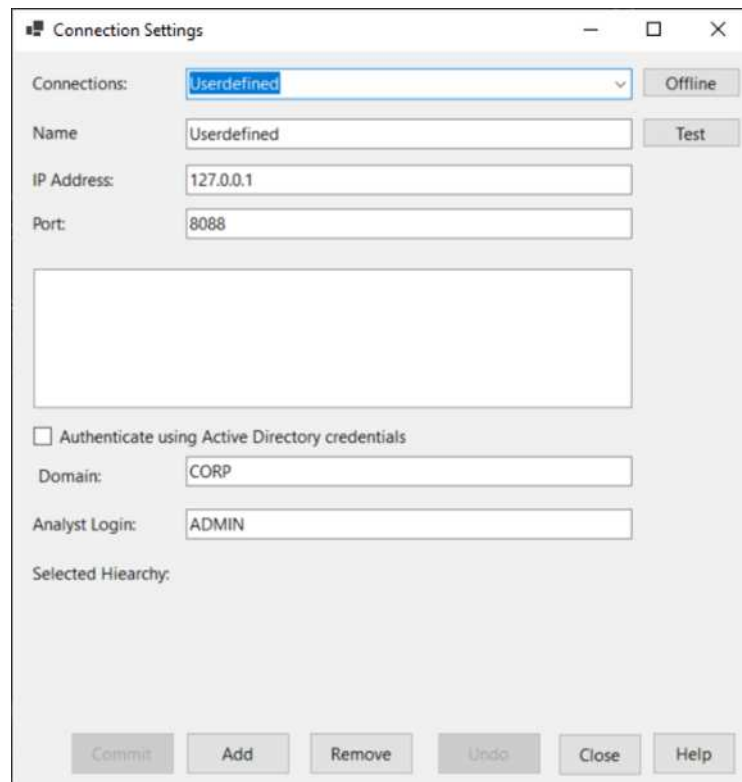
When running TCTdBX the first time after a fresh install, it is normal to get a warning that looks similar to this:

## PRODUCT DESCRIPTION

### Launching @ptitude Analyst TCTdBX



1. Click **OK** to configure the IP address and port number.



2. Enter the **IP Address** and **Port** (default values are **127.0.0.1** and **8088**) and click **Test** to confirm that the connection is working.
3. Click **Commit** to save the entered values.

To start the application in offline mode, click **Offline**.

For more information about this dialogue and the offline mode, see [Manage connections](#) and [Preferences](#).

### 1.3 Manage connections

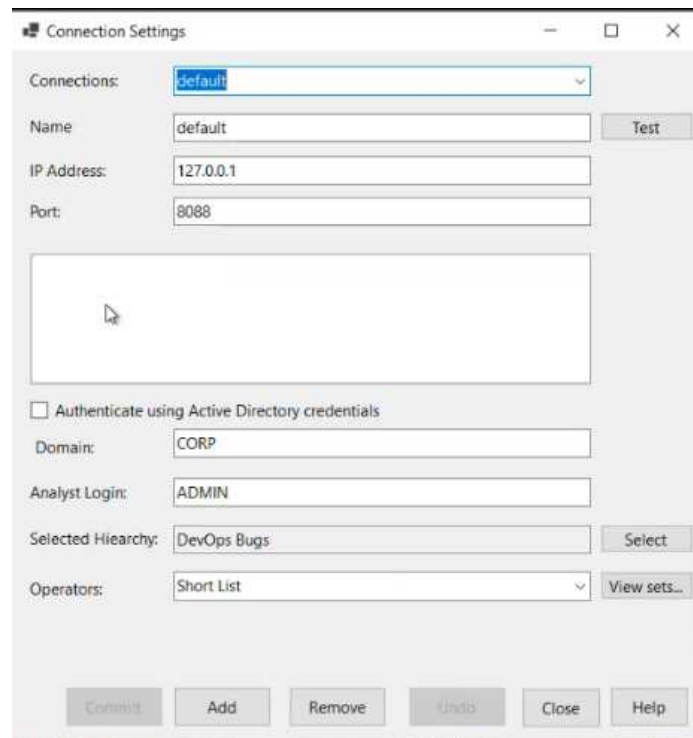


Figure 2 Connection settings

If the Transaction Server is moved, using the File Transaction Server Settings function, you can set the new: **Connections, Name, IP address** and **Port**.

This dialogue is presented when the application starts if a connection to the Transaction Server cannot be established.

If you are logging in from a computer that should have access to the Transaction Server but is not located, make sure the **SKF @ptitude Transaction Server** service is running in Windows.

It is also possible to specify the parameters used to log into the application and to use during operation in the profile. The **Analyst Login** specifies the name presented in the login dialogue each time this profile is used. The **Selected Hierarchy** and **Operators Sets** configure those initial values for the session.

Select **Authenticate using Active Directory** credentials to verify the user using Active Directory credentials and specify the **Domain** of the Active Directory user. These values will be presented in the login dialogue along with the **Analyst Login** value.

Click **Commit** to save the changes made.

To create a new connection, click **Add** and in the newly opened window enter a meaningful name and specify the Active Directory parameters.



## PRODUCT DESCRIPTION

### Preferences



**Test** – Click to test the connection.

**Undo** – Click to undo changes.

**Remove** – Click to delete a connection.

## 1.4 Preferences

Select **File > Preferences** to open the preferences window.

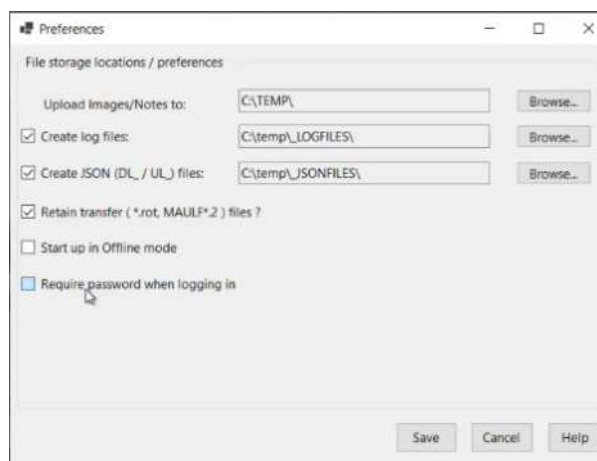


Figure 3 TCTdBX Preferences view

- **Upload Images/Notes** – Specify the upload location.
- **Create log files** – Select the box and specify location to save log files.
- **Create JSON (DL\_/UL) files** – Select the box and specify location to save JSON files.
- **Retain transfer files** – Under standard operation, the downloaded device Route files (\*.rot) and the Analyst upload data files (MAULF\*.2) are removed after successful download/upload. By selecting this option, the system will preserve these files. This is useful when contacting the Technical Services Group to help resolve an issue.
- **Start up in Offline mode** – With this option selected, when you start-up the application it will not communicate with the Transaction Server, and it will run with limited options available. Use this option when you want to connect to the device only and perform operations locally.
- **Require password when logging in** – It will force the Login Dialog to appear and require you to enter the password. If unchecked, the password last used for the profile's username is used to authenticate. If the authentication fails (for example, if the password has been changed), the login dialogue is presented.

## 1.5 Hierarchy selection

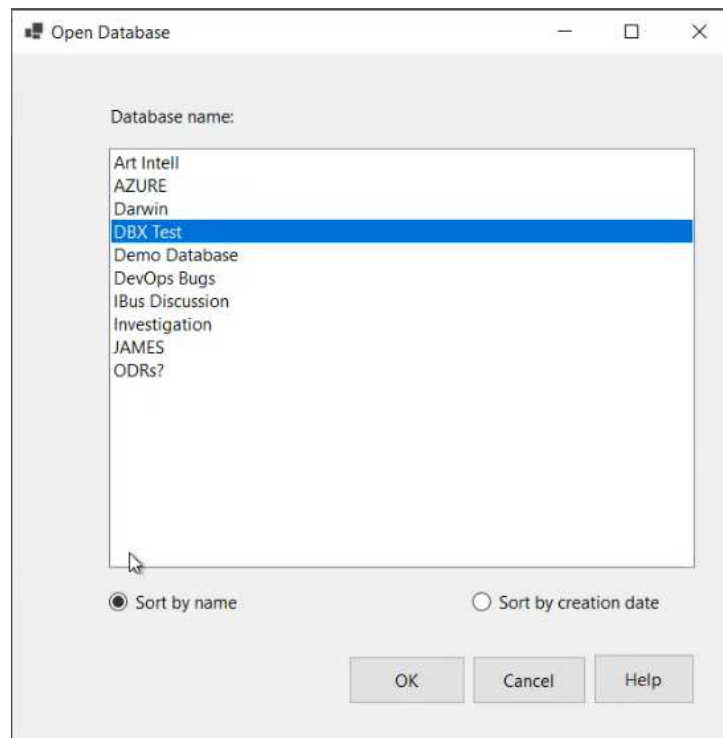


Figure 4 Hierarchy selection

@ptitude Analyst data is organized into hierarchies. In @ptitude Analyst, each user must select a Primary Hierarchy to be used as the default. This same hierarchy is used by default when a user logs into TCTdBX. If necessary, you may change the hierarchy used by TCTdBX.

**Note:** Changes to the Hierarchy selection are automatically saved to the active profile.

### To change the @ptitude Analyst hierarchy:

1. Log in to TCTdBX.
2. Select **File > Open**. The **Open Database** dialogue displays. The hierarchy currently in use is highlighted.
3. If necessary, select a different hierarchy and click **OK**.

For different sorting of the presented hierarchies, select:

- **Sort by name** or
- **Sort by creation date**

## 2 Direct database communication

### 2.1 Overview

SKF @ptitude Analyst Thin Client Transfer dBX allows data to be uploaded to and downloaded from a Microlog Analyzer dBX by directly connecting with the @ptitude Analyst database via an optimized connection using the SKF Transaction Server.

- You must log into TCTdBX from a computer with access to the Transaction Server.
- Upload and download functionality using TCTdBX is almost identical to upload and download functionality using the @ptitude Analyst interface.

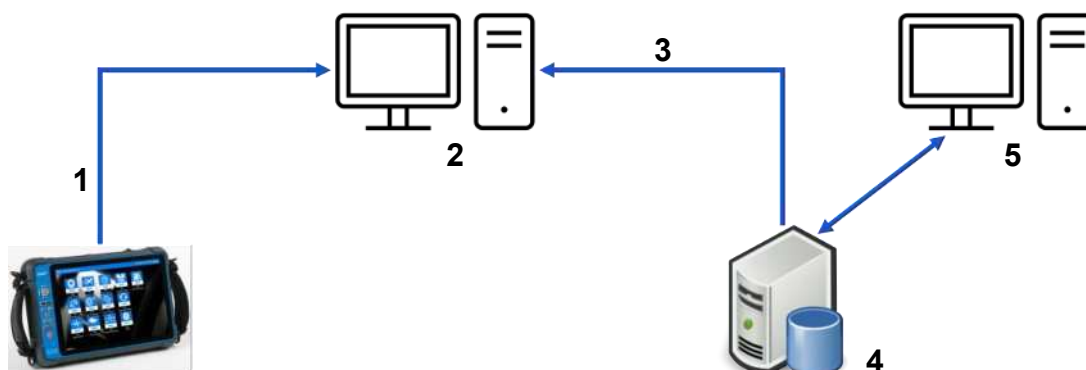


Figure 5 TCTdBX architecture overview

1. USB connection to Microlog Analyzer dBX
2. Computer running Thin Client Transfer dBX
3. Internet connection to Transaction Server
4. Computers running Transaction Server / Database Server
5. (Optional) @ptitude Analyst Client (for viewing data, reporting, database configuration)

Establishing Communication with the **Microlog Analyzer dBX** Data Acquisition Device (DAD)

Before transferring data to or from the Microlog Analyzer dBX, you must:

1. Connect the device using the provided USB cable.
2. Ensure that the cable drivers (USBCableDriver.exe) have been installed on the host PC. From the Windows Start menu, select **Apps & Features** and check if the driver is listed there.
3. Put the device in Sync Mode, go to **Utilities > Tools > Sync Mode**.

## 2.2 TCTdBX Database Communication on a Microlog Analyzer dBX

The Microlog Analyzer dBX transfer function allows you to:

- Download measurement point setups to the Microlog Analyzer dBX.
- Upload collected data from the Microlog Analyzer dBX.
- Check the Microlog Analyzer dBX status.
- Configure, clear, or reset the Microlog Analyzer dBX.

The Microlog Analyzer dBX communicates with TCTdBX using USB.


### To set up the Microlog Analyzer dBX for data transfer:

1. Connect the Microlog Analyzer dBX to the client computer with access to TCTdBX. Refer to the Microlog Analyzer dBX User Manual for more information.
2. From within TCTdBX, select **Transfer > DBX <--> DB...**
3. The software automatically checks for a connection between the host computer and the Microlog Analyzer dBX. An alert dialogue displays if there is a connection error. This dialogue appears if the cable connection is:
  - a. Not correct
  - b. The device is not in Sync Mode
  - c. The cable drivers are not installed properly
4. Click **OK** at the message to continue.

If a connection error occurs, the transfer dialogue title bar displays **Microlog Analyzer dBX not responding**. Once a connection is established, the transfer dialogue displays **Microlog Analyzer dBX ready**.

### 2.2.1 Download to a Microlog Analyzer dBX (DAD)

The **Download To DAD** (Data Acquisition Device) tab of the Microlog Analyzer dBX transfer dialogue allows you to download measurement point setups from the @ptitude Analyst database to your data acquisition device.

 *If the Microlog’s internal clock does not match your system clock, TCTdBX will reset your Microlog’s clock as soon as communications are established. See the SKF @ptitude Analyst TCTdBX Installation Manual for more details on this configuration.*

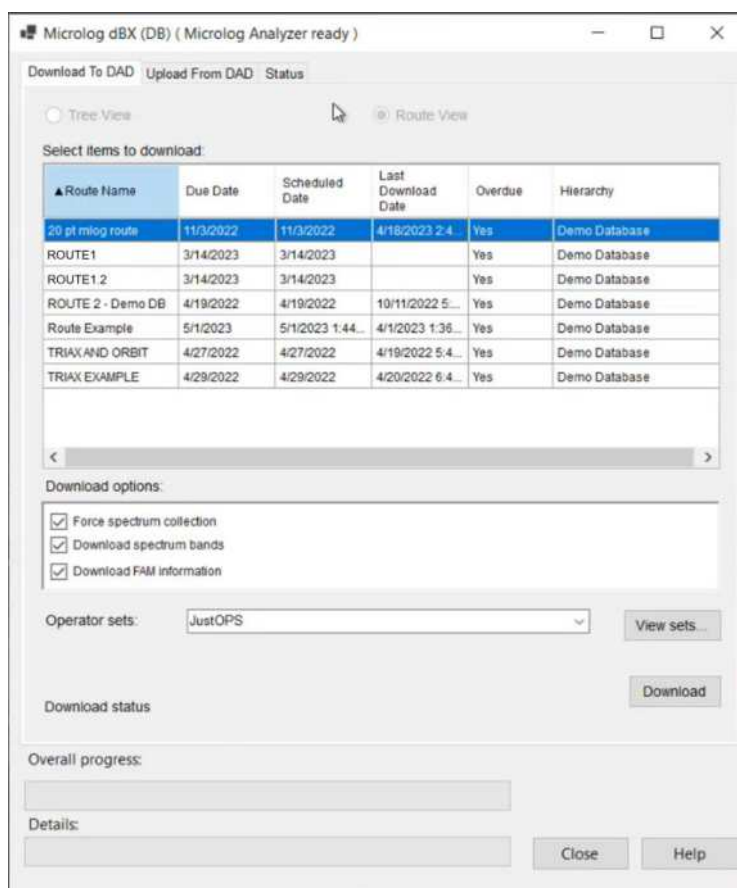


Figure 6 Download to DAD tab displaying Tree View

Items available for download appear in the **Select items to download** table.

**Tree View** – Select items to download from the Hierarchy, Routes, and/or Workspaces.

- Click on the + signs to expand the tree.

- A checkmark in the checkbox indicates *all* items in the Hierarchy, Route, or Workspace are selected.
- A grey checkmark indicates *some* items are selected.
- No checkmark indicates *no* items are selected.

**Route View** – If you are only downloading Routes, use this view to quickly select the Routes.

Routes are organised into six categories: **Route Name**, **Due Date**, **Schedule Date**, **Last Download Date**, **Overdue Status**, and **Hierarchy**.

**Note:** Only complete Routes can be downloaded.

**Download Options** – Select checkboxes to include in the download. Available download options vary depending on whether you are downloading to a Microlog Analyzer dBX.

**Download options** for the **Microlog Analyzer dBX** are:

- **Force spectrum collection** – Forces spectrum collection on every overall measurement. Use for baseline data collection and/or data collection before or after a machine overhaul (when collected spectra are necessary for every point).
- **Download spectral bands** - Use this feature to download spectral band alarms for the downloaded points.
- **Download FAM information** - Use this feature to download bearing fault frequency information associated with the downloaded points.

Coded Microlog dBX notes are automatically included in a Microlog Analyzer dBX download.

**Operator sets** – For more information, see [Operator Sets](#).

**Hierarchy Name** – If you select items directly from the Hierarchy list, they will appear as a specially named Route in the Microlog Analyzer dBX.

- Assign a unique name in the **Hierarchy Name** text field for identification purposes.


**Download** – Click to begin the download. The download progress displays in the progress bar.

- The hierarchy specified on the Microlog Analyzer dBX must match the hierarchy currently selected in TCTdBX.  
If an error dialogue displays when the download process is initiated, check the dialogue's Status tab to compare the Microlog dBX's Data Source to the current TCTdBX hierarchy and configure the DAD's status information if necessary.

### 2.2.2 Upload from Microlog Analyzer dBX (DAD)

After completing the data collection, re-connect the Microlog Analyzer dBX and establish communications using the downloading procedure.

At the TCTdBX Microlog Analyzer dBX transfer screen, select the **Upload from DAD** tab.

 *If the Microlog's internal clock does not match your system clock, TCTdBX will reset your Microlog's clock as soon as communications are established. The transaction server can also be configured to adjust the dates and times of any measurements being processed, provided those measurements' dates and times fall outside the configured tolerance period. The software can be configured to create a new Event Log record and/or point Notes entry reflecting each adjustment. See the SKF @ptitude Analyst TCTdBX Installation Manual for more details on the configurations mentioned above.*

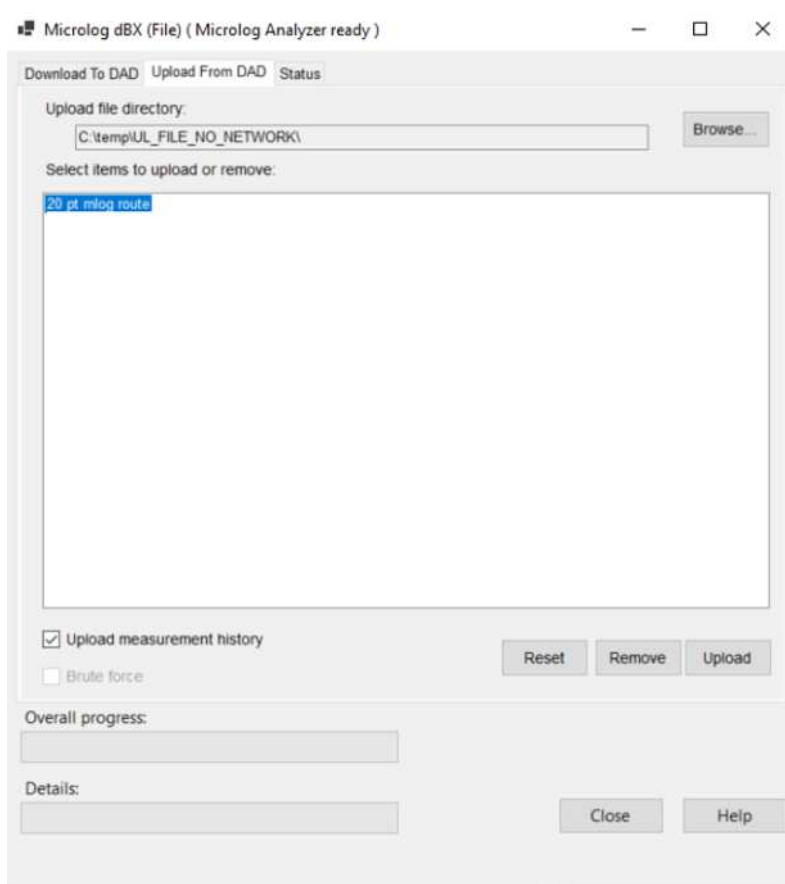


Figure 7 Upload From DAD Tab

**Select items to upload or remove** – Displays all Routes currently stored in the connected Microlog Analyzer dBX.

- Select the Routes you wish to upload or remove. Use Ctrl+click to select multiple items.

**Brute Force** – A Brute Force upload creates new Points (beneath a Non-Route set in the hierarchy) for all uploaded collector Points (even if the uploaded Points already exist in the hierarchy) and uploads all data into these new Points.

- After selecting which Routes to upload, use this check box to select whether to use brute force to create new hierarchy Points for the uploaded data.

**Upload Measurement History** – When data is collected on the Microlog Analyzer dBX for a Point that already has a stored measurement, there is an option to append the new measurement. If a new measurement is appended, the original measurement is added to an historical data file. Enable this check box to include historical measurements in the upload. Disable it to only upload the most recent measurement for each Point.

**Reset** – After uploading, click to reset selected Routes. Use this option to clear collected data from the Microlog Analyzer dBX for the selected Routes, but leave the Route structure (SETs, Machines, and Points) and measurement instructions. This allows you to take data for a Route, upload it, reset the data, and then take data on the same Routes again. The reset option also downloads all operator names within the selected operator set to the Microlog Analyzer dBX.

**Remove** – Click to remove selected Routes from the Microlog Analyzer.

**Upload** – Click to initiate the upload process. Points are automatically processed into the hierarchy after the upload. Process status displays on the status bar.



### 2.2.3 Status

The **Status** tab displays the connected Microlog Analyzer dBX’s status and compares the DAD’s current hierarchy with the current @ptitude Analyst hierarchy. Status information appears in the **Device status information** window.

At the TCTdBX Microlog Analyzer dBX transfer screen, select the **Status** tab.

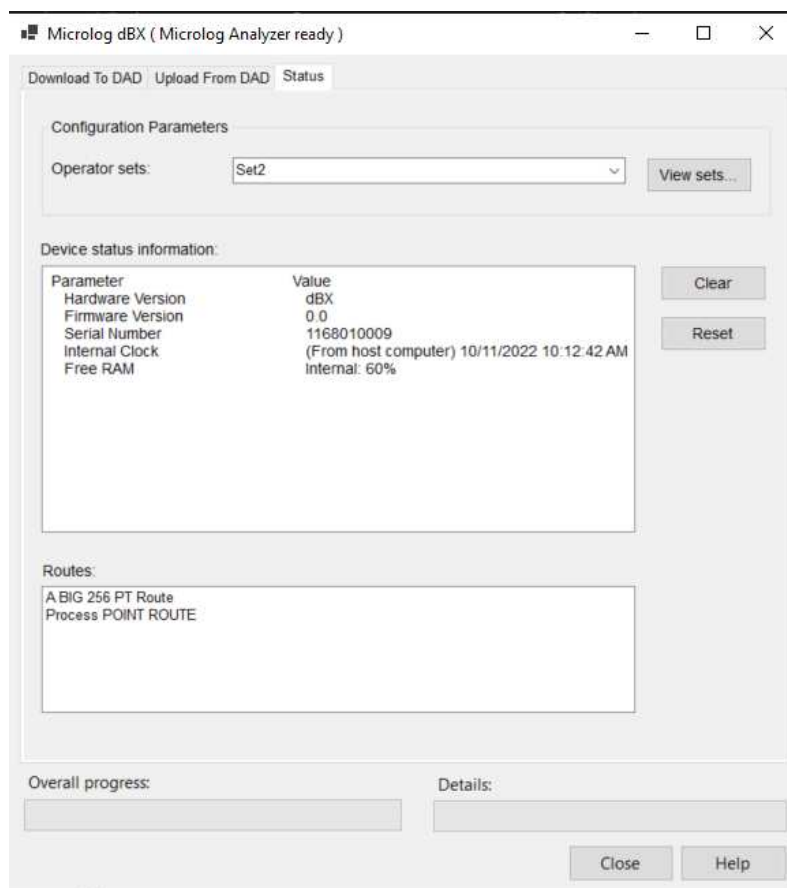


Figure 8 The Microlog Analyzer dBX Dialog’s Status Tab

The tab’s **Configuration Parameters** area allows you to select operator sets and download them to the DAD using the **Clear** and **Reset** buttons.

Options include:

**Operator Sets** – The Microlog Analyzer dBX DADs support operator names to tag measurement data with the corresponding operator’s name. Operator sets group several operators together.

- If desired, select an operator set from the drop down list. The specified operator set downloads to the DAD when you click the **Clear / Reset** buttons.

**View Sets** – Select this option to view the operators that are in a particular operator set. The **View Sets** dialog displays.

- Select a set from the drop down list. All operators included in the selected set display in the **Operators** area.
- Click **OK** to return to the **Status** tab with the current operator selected in the **Operator Sets** field.

**Device status information** includes:

**Hardware Version** – The type of device (dBX).

**Firmware Version** – The Microlog Analyzer dBX firmware version number.

**Serial Number** – The serial number of the device.

**Internal Clock** – Date and time from the Microlog Analyzer dBX's clock.

**Free RAM** – The percent of the Microlog Analyzer dBX memory that is free for storage.

**Routes** – Displays the list of all Routes stored in the connected Microlog Analyzer dBX.

The following buttons appear in this tab:

**Clear** – Use this option to clear the entire Microlog Analyzer dBX. It erases all data, SETs, machines, points, Routes, Route instructions, non-Route points, operator lists, and coded notes stored in the Microlog Analyzer dBX. It does not change the DAD's menu settings. After clearing the DAD, the **Clear** option downloads the specified operator list from the @ptitude Analyst Database to the DAD.

**Reset** – After uploading, click to reset selected Routes. Use this option to clear collected data from the Microlog Analyzer dBX for the selected Routes, but leave the Route structure (SETs, Machines, and points), sequence, and measurement instructions. This allows you to take data for a Route, upload it, reset the data, and then take data on the same Routes again. The reset option also downloads all operator names within the selected operator set to the Microlog Analyzer dBX.

## 3 File transfer

### 3.1 Overview

SKF @ptitude Analyst TCTdBX allows you to upload and download data using files created on remote systems, without requiring a direct connection of the Microlog Analyzer dBX to the computer hosting @ptitude Analyst. It is used in situations where data collection occurs at a different location than the data analysis using @ptitude Analyst.

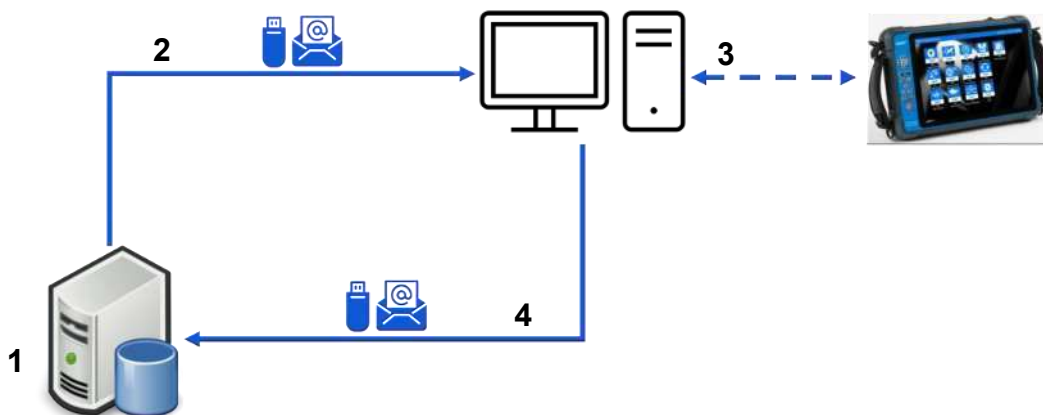


Figure 9 TCTdBX File transfer architecture

1. @ptitude Analyst database and TCTdBX
2. Transaction using USB stick or e-mail
3. Computer with TCTdBX connected to Microlog Analyzer dBX
4. Transaction using USB stick or e-mail

Use the following sequence of steps when performing file transfer:

1. On a computer with access to the @ptitude Analyst database via the Transaction Server, the Program Manager uses TCT dBX's **Transfer > File <--> DB** option to create Route configuration files (\*.ROT).
2. Send those files using e-mail or USB memory stick to a computer with access to the Microlog dBX at the remote site.
3. The Operator responsible for collecting data connects the Microlog dBX to that computer and uses TCT dBX's **Transfer > DBX <--> File** option to download those Route configuration files directly to the device.
4. Collect the measurements on the Microlog dBX.

5. Connect the Microlog dBX to the computer with TCT dBX and use the **Transfer > DBX <--> File** option to upload the files.
6. The Operator then sends those files using e-mail or USB memory stick to the Program Manager.
7. The Program Manager, on a computer with access to the @ptitude Analyst database using the Transaction Server, uses TCT dBX's **Transfer \ File <--> DB** option to upload the collected measurements to the database.

### 3.2 File transfer to / from @ptitude Analyst database – File <--> DB

File transfer to and from an @ptitude Analyst database allows you to create a file with data collection points that may be transferred to your remote site. Once data has been collected, it also allows you to upload resulting measurements back into @ptitude Analyst.

To access the file to database transfer dialog, select **Transfer > File <- -> DB...**

#### 3.2.1 Generate download file

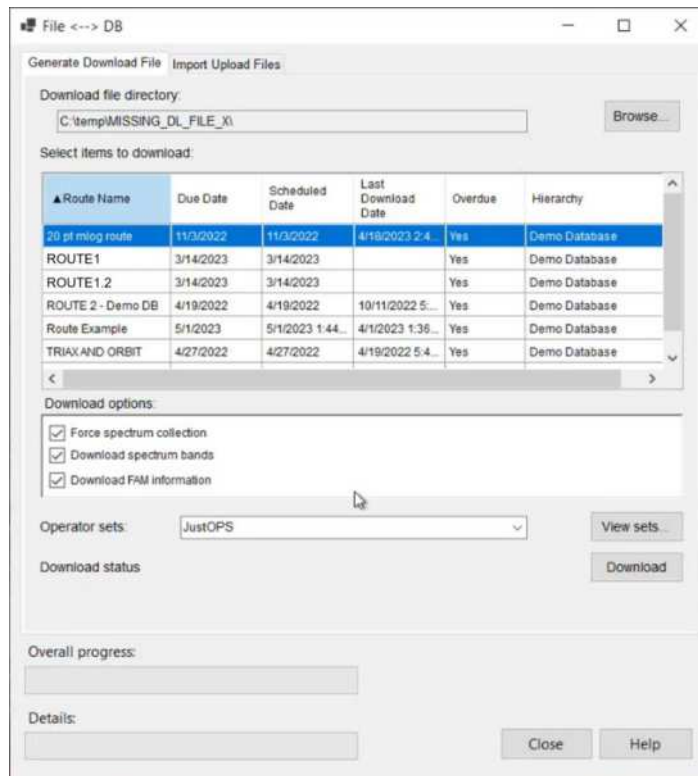


Figure 10 File <- -> DB... – Generate Download File tab

## FILE TRANSFER

File transfer to / from @ptitude Analyst database – File <--> DB



The options available in this tab are similar to the ones in [Download to a Microlog Analyzer dBX](#).

Use the **Generate Download File** tab to create a download file that can be emailed to a remote site. This download file may contain multiple Routes, Hierarchies, or Workspaces.

### To download files:

1. Click **Browse** and select a download location.
2. Select Routes to download from the table.
3. Select from the available **Download Options**. For more information about the options, see [Download options for Microlog dBX](#).
4. Click **Download** and follow the download process under **Overall progress** and **Details**.
5. Now you can see the downloaded files in the selected download location.

### 3.2.2 Import upload files

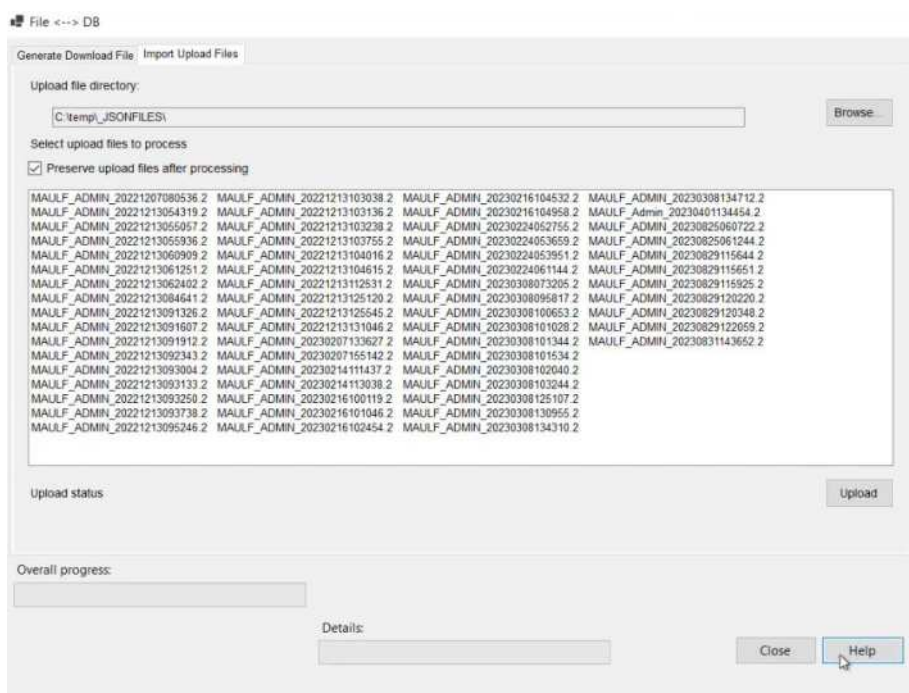


Figure 11 File <--> DB – Import upload files

Use the **Import upload files** tab to upload processed files to @ptitude Analyst database. Once uploaded to the Analyst database, the files are processed by the Transaction Server and new measurements are stored for analysis.

**To upload files:**

1. Click **Browse** and navigate to the location where your MAULF (Microlog Analyzer Upload Files) reside.
2. To keep the files after processing, select **Preserve upload files after processing**. Or unselect the checkbox if you wish to delete them after processing.
3. Select the files you wish to upload and click **Upload**.
4. Follow the upload process in the **Overall progress** and **Details** bar.
5. Now you can see the uploaded files in the upload window.

### 3.3 File transfer to / from Microlog Analyzer dBX – DBX <- - > File

The files downloaded from the database can now be transferred to your Microlog dBX. To access the file to Microlog dBX transfer dialog, select **Transfer > DBX <- -> File...**

#### 3.3.1 Download to Microlog Analyzer dBX (DAD)

Use the **Download to DAD** tab to save measurement files from @ptitude Analyst database to your Microlog dBX.

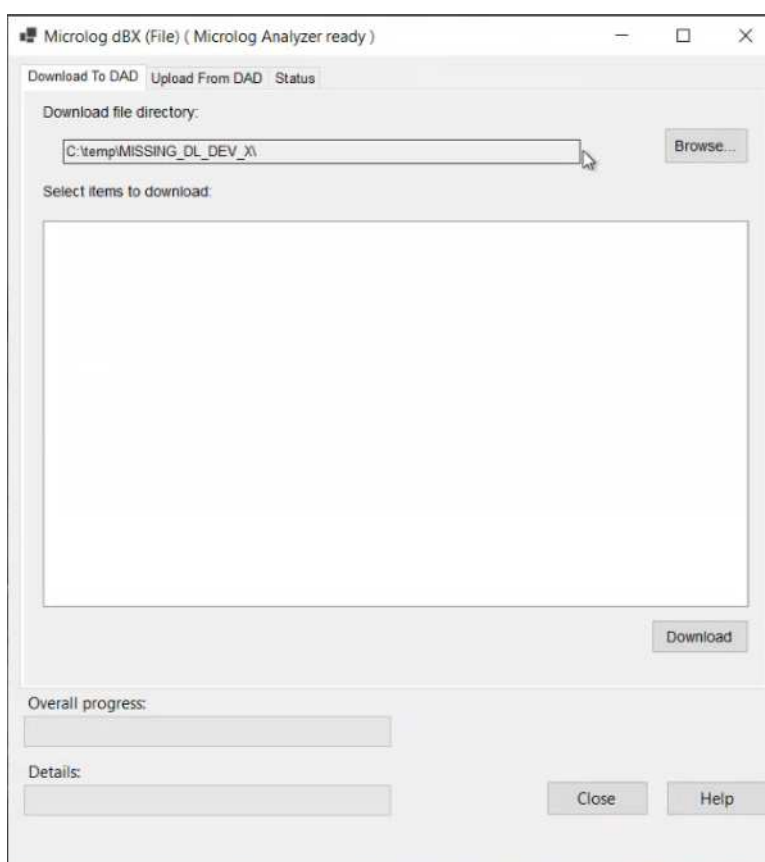


Figure 12 DBX <- -> File – Download to DAD tab

#### To download files to Microlog dBX:

1. Click **Browse** and select the folder where you have previously saved your downloaded files.
2. The files are now listed under **Selected items to download**.
3. Select the files and click **Download** to save the files to your Microlog dBX.

### 3.3.2 Upload from Microlog Analyzer dBX (DAD)

Use the **Upload to DAD** tab to upload files from your Microlog dBX to @ptitude Analyst database.

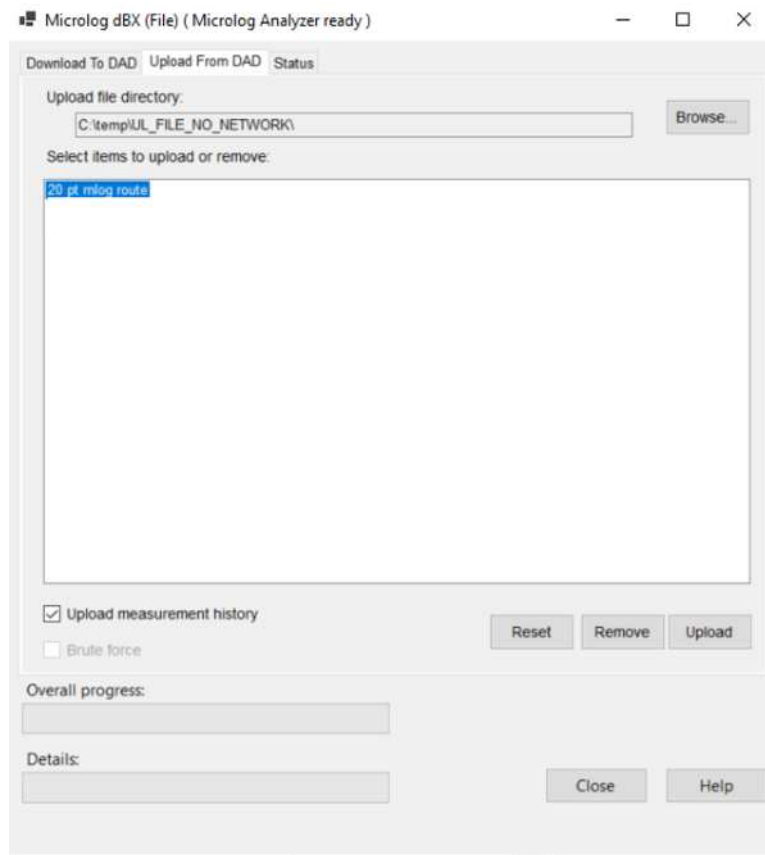


Figure 13 DBX <- - > File – Upload to DAD tab

#### To upload files from Microlog dBX:

1. Click **Browse** and select an upload location.
2. Select items to upload and click **Upload**.
3. Follow the download process under **Overall progress** and **Details**.

For more information about the other options available in this tab, see [Upload from Microlog dBX](#).



## FILE TRANSFER

File transfer to / from Microlog Analyzer dBX – DBX <- - > File



### 3.3.3 Status

Use the **Status tab** check different device status information.

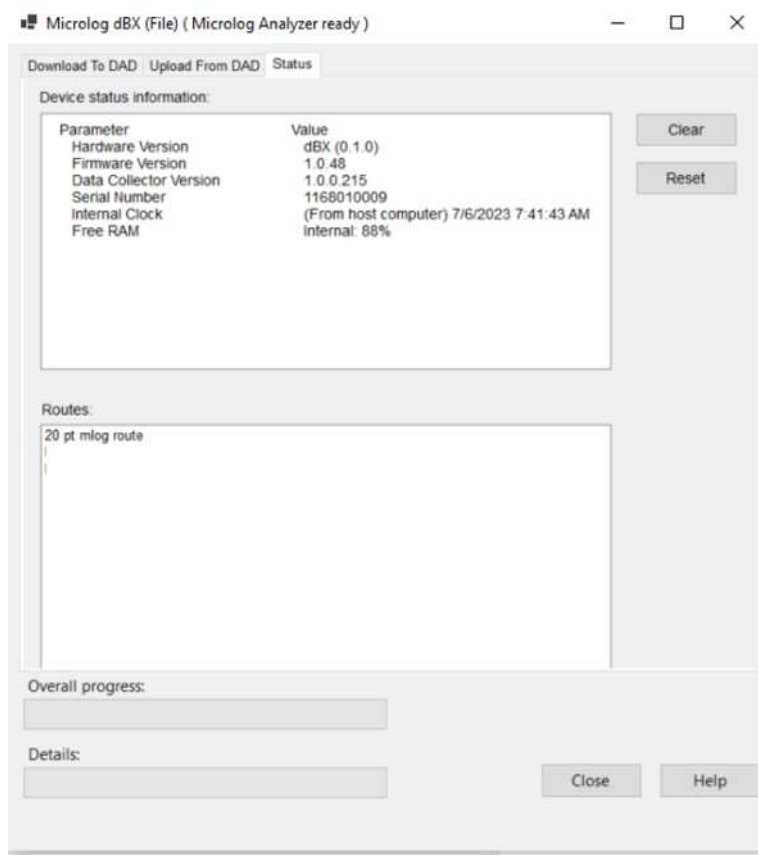


Figure 14 DBX <- -> File – Status tab

For more information about Device status information, Routes and other available options, see [Status](#).



## Appendix A

### End-User License Agreement

***THIS END-USER LICENSE AGREEMENT*** (this “Agreement”) is entered into by and between SKF USA Inc. and/or SKF Condition Monitoring Center AB (hereinafter referred to collectively as the “Licensor”) and any person or business that executes this Agreement by clicking the “I agree” icon at the end of this Agreement or by accessing, using, or installing the Software (“Licensee” or “You”). Licensor and Licensee shall be referred to collectively in this Agreement as the Parties.

**BY CLICKING THE ACCEPTANCE BUTTON OR ACCESSING, USING, OR INSTALLING THE SOFTWARE, OR ANY PART THEREOF, YOU EXPRESSLY AGREE TO BE BOUND BY ALL OF THE TERMS OF THIS AGREEMENT. IF YOU DO NOT AGREE TO ALL OF THE TERMS OF THIS AGREEMENT, THE BUTTON INDICATING NON-ACCEPTANCE MUST BE SELECTED, AND YOU MAY NOT ACCESS, USE, OR INSTALL ANY PART OF THE SOFTWARE.**

#### 1. DEFINITIONS

- (a) **Derivative Works.** The Term “Derivative Works” shall have the same meaning as set forth in the U.S. Copyright Act, as amended from time to time, in title 17 of the United States Code.
- (b) **Effective Date.** The term “Effective Date” shall mean the date on which Licensee assents to the terms of this Agreement by clicking the “I agree” button at the bottom of this Agreement.
- (c) **Intellectual Property Rights.** The term Intellectual Property Rights shall mean all rights arising or protectable under the copyright, trademark, patent, or trade secrets laws of the United States or any other nation, including all rights associated with the protection of computer programs and/or source code.
- (d) **Person.** The term “Person” shall mean an individual, a partnership, a company, a corporation, an association, a joint stock company, a trust, a joint venture, an unincorporated organization, or a governmental entity (or any department, agency, or political subdivision thereof).
- (e) **Software.** The term “Software” shall mean the software application entitled Software for Wireless Monitoring System V/T, SKF @ptitude Analyst, SKF @ptitude Inspector, SKF @ptitude Observer, SKF @ptitude Decision Support or any other software within the SKF @ptitude family suite, which is an application developed, owned, marketed, and licensed by Licensor. The term Software shall include the object code of Software for Wireless Monitoring System V/T, SKF @ptitude Analyst, SKF @ptitude Inspector,

SKF @ptitude Observer, SKF @ptitude Decision Support or any other object code within the SKF @ptitude family suite and any and all user manuals, or other technical documentation, authored by Licensor in connection with Software for Wireless Monitoring System V/T, SKF @ptitude Analyst, SKF @ptitude Inspector, SKF @ptitude Observer, SKF @ptitude Decision Support or any other software within the SKF @ptitude family. The term “Software” includes any corrections, bug fixes, enhancements, releases, updates, upgrades, or other modifications, including custom modifications, to Software for Wireless Monitoring System V/T, SKF @ptitude Analyst, SKF @ptitude Inspector, SKF @ptitude Observer, SKF @ptitude Decision Support or any other software within the SKF @ptitude family suite and any and all user manuals. The term Software also includes any supplemental, add-on, or plug-in software code provided to Licensee in the course of receiving Product Support Plan services from Licensor. The term Software shall not be construed to include the source code for Software for Wireless Monitoring System V/T, SKF @ptitude Analyst, SKF @ptitude Inspector, SKF @ptitude Observer, SKF @ptitude Decision Support or any other software within the SKF @ptitude family suite.

## **2. LICENSE**

- (a) Grant of License.** Licensor grants Licensee, pursuant to the terms and conditions of this Agreement, a non-exclusive, non-transferable, and revocable license to use the Software in strict accordance with the terms and conditions of this Agreement, including any concurrent use, network or other limitations set forth in subsection (b) below. All rights not specifically granted by Licensor under this Agreement are retained by Licensor and withheld from Licensee.
  
- (b) Installation and Use Rights.** Licensee shall use the Software only on its internal computer equipment, whether such equipment is owned, leased, or rented, at the Licensee’s principal business office. The following paragraphs govern your installation and use rights with regard to the Software, depending on the type of license you have obtained from Licensor.
  - (i)** If you obtained a stand-alone license of the Software, you may install one (1) copy of the Software on one (1) computer residing in your principal business office.
  
  - (ii)** If you obtained a network license of the Software, you may install one (1) copy of the Software on as many networked clients (workstations) as authorized by your network license, as set forth more particularly in the applicable purchase order or other ordering documents memorializing your license acquisition; provided, however, that all network clients (workstations) are connected to a single licensed database residing in your principal business office.

- (iii)** If you obtained a network license of the Software, you may connect to multiple licensed databases, you may install the database-dedicated clients up to the total number of networked clients acquired by you under the applicable purchase order or other ordering documents memorializing your license acquisition.
  
- (c) Other Conditions of Use.** Licensor understands and agrees that the Software works in conjunction and is compatible with database software licensed to you by Microsoft. Upon installation of the Software, the Software may detect an installed database software application from Microsoft, and if so, the Software will be fully installed. If no installed database software application from Microsoft is detected, the Software will not install until such time as Licensee installs a valid and Software compatible copy of a Microsoft SQL Server database and consents to the license terms of such database software application. If Licensee does not agree to the terms of the Microsoft SQL Server license, or if the Licensee fails to install such database software, the Software will not work. Licensee is responsible for maintaining a valid database license in accordance with the Microsoft license agreement at all times.
  
- (d) Restrictions on Use.** Licensee may use the Software only for its internal business purposes and on the identified equipment on which the Software was first installed or for which it is otherwise licensed; provided, however, that Licensee may temporarily use the Software on a back-up system in the event that the primary licensed system is inoperative or test system not used for production but solely for the purposes of testing the Software. Licensee may not use the Software for any other purpose. Licensee shall not:

  - (i)** permit any parent, subsidiaries, affiliated entities or third parties to use the Software;
  - (ii)** use the Software in the operation of a service bureau;
  - (iii)** allow access to the Software through any workstations located outside of Licensee's principal business offices;
  - (iv)** rent, resell, lease, timeshare or lend the Software to any Person;
  - (v)** sublicense, assign, or transfer the Software or this license for the Software to any Person;
  - (vi)** reproduce, distribute, or publicly display the Software;
  - (vii)** make the Software accessible to any Person by any means, including posting on a web site or through other distribution mechanisms over the Internet;

- (viii) reverse assemble, disassemble, reverse engineer, reverse compile, decompile, or otherwise translate the Software or prepare Derivative Works based on the Software;
  - (ix) place, reproduce, or make available the Software on Licensee's computer network if Licensee is only authorized by this Agreement to operate the Software on a single workstation;
  - (x) exceed at any given point in time the total number of network clients authorized by the applicable purchase order or ordering document to use or access the Software;
  - (xi) edit or modify the Software except as expressly authorized by Licensor, including altering, deleting, or obscuring any proprietary rights notices embedded in or affixed to the Software;
  - (xii) use the Software in any manner that disparages Licensor or Microsoft, or use the Software in a way that infringes the Intellectual Property Rights of the foregoing parties; or
  - (xiii) use the Software in a manner that violates any federal, state, or local law, rule or regulation, or use the Software to violate the rights of any third party, or use the Software to promote pornography, hatred, or racism.
- (e) **Copies.** Licensee, solely to enable it to use the Software, may make one archival copy of the Software's computer program, provided that the copy shall include Licensor's copyright and any other proprietary notices. The Software delivered by Licensor to Licensee and the archival copy shall be stored at Licensee's principal business office. If you purchased a network license of the Software, you may install one additional copy of the Software on your network for the limited purpose of testing the Software's operation. Except for the limited reproduction rights set forth in this paragraph, Licensee shall have no other right to copy, in whole or in part, the Software. Any copy of the Software made by Licensee is the exclusive property of Licensor.
- (f) **Modifications.** Licensee agrees that only Licensor shall have the right to alter, maintain, enhance or otherwise modify the Software.
- (g) **Protection of Software.** Licensee agrees that it will take action by instruction, written agreement, or otherwise as appropriate with any person permitted access to the Software to enable Licensee to comply with its obligations hereunder. Licensee shall maintain records of the number and location of all copies of Software. Licensee shall not provide, permit access to or use of, or otherwise make available any Software in any form without

Licensor's prior written agreement, except to Licensee's employees for purposes specifically authorized by this Agreement. Licensee understands and agrees that the source code for the Software is a valuable copyright and contains valuable trade secrets of Licensor. Licensee agrees not to discover or attempt to discover, or assist or permit any Person to discover or attempt to discover, by any means whatsoever the source code of the Software.

- (h) **Licensor's Audit Rights.** Licensor shall possess the right to audit Licensee's use of the Software to determine compliance with this Agreement (hereinafter referred to as "Licensor's Audit Rights"). Licensor's Audit Rights shall be exercised in accordance with the following paragraphs:
- (i) **Notice of Audit.** Licensor shall provide Licensee with at least five (5) calendar days advance written notice of its intent to exercise the Licensor's Audit Rights.
  - (ii) **Conduct of Audit.** The audit conducted by Licensor shall consist of a physical review of the computer hardware, software, and middleware operated by Licensee at its principal business office and any other office for which Licensor, in its sole and arbitrary discretion, deems an audit appropriate. Licensee shall provide Licensor with unrestricted access to its computer hardware, software, and middleware in connection with any audit conducted by Licensor.
  - (iii) **Costs of Audit.** If Licensor's audit uncovers a violation of this Agreement by Licensee, Licensee shall pay all costs and expenses incurred by Licensor in exercising the Licensor Audit Rights, including, without limitation, all attorneys' fees and agent fees incurred by Licensor. If Licensor concludes that no violation of this License Agreement has occurred, Licensor shall bear all costs and expenses incurred in exercising the Licensor Audit Rights. If Licensee obstructs, restricts, or otherwise prevents Licensor from conducting a full and unrestricted audit, Licensee shall bear all costs and expenses, including attorneys' fees, incurred by Licensor in enforcing this Section 2(h) before any court or judicial tribunal.
  - (iv) **Frequency of Audits.** Licensor's Audit Rights shall be exercised no more than two (2) times in any one calendar year.
- (i) **Validity of Intellectual Property Rights.** In any action, dispute, controversy, or lawsuit arising out of or related to this Agreement, Licensee shall not contest the validity of Licensor's Intellectual Property Rights related to the Software. Licensee hereby agrees that it has had an opportunity to investigate the validity of Licensor's Intellectual Property Rights, and acknowledges that Licensor's Intellectual Property Rights related to the Software are valid and enforceable.

- (j) **Material Terms and Conditions.** Licensee specifically agrees that each of the terms and conditions of this Section 2 are material and that failure of Licensee to comply with these terms and conditions shall constitute sufficient cause for Licensor to terminate this Agreement and the license granted hereunder immediately and without an opportunity to cure. This subsection 2(j) shall not be construed to preclude, or in any way effect, a finding of materiality with respect to any other provision of this Agreement.

### 3. LICENSE FEE

The applicable licensee fees will be set forth in the quote issued to Licensee by Licensor or otherwise established in the applicable purchase order or other ordering documents memorializing your license acquisition.

### 4. OWNERSHIP

- (a) **Title.** Licensee understands and agrees that Licensor owns all Intellectual Property Rights related to the Software, including custom modifications to the Software, whether made by Licensor or any third party. Licensee agrees that this Agreement effects a license, not a sale, of the Software and that the first sale doctrine, as codified in 17 U.S.C. § 109, does not apply to the transaction effected by this Agreement.

- (b) **Transfers.** Under no circumstances shall Licensee sell, license, sublicense, publish, display, distribute, assign, or otherwise transfer (hereinafter referred to collectively as a "Transfer") to a third party the Software or any copy thereof, in whole or in part, without Licensor's prior written consent. Any Transfer effected in violation of this Section 4(b) shall be void ab initio and of no force or effect.

### 5. MAINTENANCE AND SUPPORT

Licensor may provide you with support services related to the Software called Product Support Plan ("PSP") services. Use of PSP is governed by the policies and programs described in the PSP literature or other material from Licensor's Product Support Department (hereinafter referred to as the "PSP Policies") that may be updated by Licensor from time to time. If you select and pay for PSP, the PSP Policies shall be specifically incorporated into this Agreement by this reference. Licensee acknowledges that Licensor may use any technical information provided by Licensee in the course of receiving PSP services for Licensor's business purposes, including for product support and development. Licensor will not utilize such technical information in a manner that identifies Licensee.

### 6. CONFIDENTIAL INFORMATION

Licensee agrees that the Software contains proprietary information, including trade secrets, know-how and confidential information (hereinafter referred to collectively as the "Confidential Information"), that is the exclusive property of Licensor. During the period this Agreement is in effect and at all times after its



termination, Licensee and its employees and agents shall maintain the confidentiality of the Confidential Information and shall not sell, license, publish, display, distribute, disclose or otherwise make available the Confidential Information to any Person nor use the Confidential Information except as authorized by this Agreement. Licensee shall not disclose the Confidential Information concerning the Software, including any flow charts, logic diagrams, user manuals and screens, to persons not an employee of Licensee without the prior written consent of Licensor.

## **7. LIMITED WARRANTIES**

- (a) Licensor warrants that the Software will perform substantially in accordance with its documentation for a period of 180 days from the date of shipment of the Software; provided, however, that the foregoing warranty only applies if: (i) Licensee makes Licensor aware of any defect with the Software within seven (7) days after the occurrence of the defect; (ii) Licensee has paid all amounts due under this Agreement; and (iii) Licensee has not breached any provision of this Agreement. The foregoing warranty does not apply in the event that: (i) the Software and documentation have been subject to misuse, neglect, alteration, modification, customization, improper installation, and/or unauthorized repair; (ii) the Software or any associated software or equipment have not been properly maintained in accordance with applicable specifications and industry standards or have been maintained in unsuitable environmental conditions; or (iii) Licensee has used the Software in conjunction with other equipment, hardware, software, or other technology that created an adverse impact on the operation, functioning, or performance of the Software.
- (b) EXCEPT AS SET FORTH IN THIS SECTION 7 AND TO THE EXTENT PERMITTED BY APPLICABLE LAW, ALL EXPRESS AND/OR IMPLIED WARRANTIES OR CONDITIONS, INCLUDING BUT NOT LIMITED TO IMPLIED WARRANTIES OR CONDITIONS OF MERCHANTABILITY, MERCHANTABILITY OF A COMPUTER PROGRAM, INFORMATIONAL CONTENT, SYSTEM INTEGRATION, FITNESS FOR A PARTICULAR PURPOSE, AND NON-INFRINGEMENT, ARE HEREBY DISCLAIMED AND EXCLUDED BY LICENSOR.
- (c) The remedies set forth in this Section 7 are the exclusive remedies available to Licensee for any problem in the performance of the Software.

## **8. LIMITATIONS ON LIABILITY**

- (a) **Limitations and Exclusions.** IN NO EVENT WILL LICENSOR BE LIABLE TO LICENSEE FOR ANY DIRECT, INDIRECT, INCIDENTAL, CONSEQUENTIAL, PUNITIVE OR OTHER SPECIAL DAMAGES, LOST PROFITS, OR LOSS OF INFORMATION SUFFERED BY LICENSEE ARISING OUT OF OR RELATED TO THIS AGREEMENT OR THE USE OF

THE SOFTWARE, FOR ALL CAUSES OF ACTION OF ANY KIND (INCLUDING TORT, CONTRACT, NEGLIGENCE, STRICT LIABILITY, BREACH OF WARRANTY OR CONDITION, AND STATUTORY) EVEN IF LICENSOR HAS BEEN ADVISED OF THE POSSIBILITY OF SUCH DAMAGES. THE PRECEDING EXCLUSION AND DISCLAIMER OF DAMAGES SHALL APPLY TO ALL CLAIMS MADE BY LICENSEE RELATED TO OR ARISING OUT OF LICENSEE'S USE OF THE SOFTWARE, INCLUDING, BUT NOT LIMITED TO, CLAIMS ALLEGING THAT THE SOFTWARE, OR ANY COMPONENT THEREOF, FAILED OF ITS ESSENTIAL PURPOSE OR FAILED IN SOME OTHER RESPECT.

- (b) **Acknowledgment.** Licensee agrees that the limitations of liability and disclaimers of warranty set forth in this Agreement will apply regardless of whether Licensor has tendered delivery of the Software or Licensee has accepted the Software. Licensee acknowledges that Licensor has set its prices and entered into this Agreement in reliance on the disclaimers of warranty and the limitations and exclusions of liability set forth in this Agreement and that the same form an essential basis of the bargain between the Parties.

## 9. **TERM AND TERMINATION**

- (a) **Term.** This Agreement shall commence on the Effective Date and shall continue in existence until it is terminated in accordance with Section 9(b) below.
- (b) **Termination.** Licensor may terminate this Agreement and the license conveyed hereunder in the event that Licensee breaches any provision, term, condition, or limitation set forth in this Agreement, including but not limited to the license restrictions set forth in Section 2(d) of this Agreement.
- (c) **Effect of Termination.** Within ten (10) days after termination of this Agreement and the license granted hereunder, Licensee shall return to Licensor, at Licensee's expense, the Software and all copies thereof, and deliver to Licensor a certification, in writing signed by an officer of Licensee, that all copies of the Software have been returned to Licensor and that Licensee has discontinued its use of the Software.

## 10. **ASSIGNMENT**

Licensee shall not assign or otherwise transfer the Software or this Agreement to anyone, including any parent, subsidiaries, affiliated entities or third Parties, or as part of the sale of any portion of its business, or pursuant to any merger, consolidation or reorganization, without Licensor's prior written consent. Any assignment or transfer effected in violation of this Section 10 shall be void ab initio and of no force or effect.

**11. FORCE MAJEURE**

Neither party shall be in default or otherwise liable for any delay in or failure of its performance under this Agreement if such delay or failure arises by any reason beyond its reasonable control, including any act of God, any acts of the common enemy, the elements, earthquakes, floods, fires, epidemics, riots, failures or delay in transportation or communications; provided, however, that lack of funds shall not be deemed to be a reason beyond a party's reasonable control. The Parties will promptly inform and consult with each other as to any of the above causes that in their judgment may or could be the cause of a delay in the performance of this Agreement.

**12. NOTICES**

All notices under this Agreement are to be delivered by depositing the notice in the mail, using registered mail, return receipt requested, to the party's last known principal business address or to any other address as the party may designate by providing notice. The notice shall be deemed delivered four (4) days after the notice's deposit in the mail, if such notice has been sent by registered mail.

**13. CHOICE OF LAW**

This Agreement (including all Exhibits), including its formation, execution, interpretation, and performance, and the rights and obligations of the Parties hereunder, shall be governed by and construed in accordance with the laws of the Commonwealth of Pennsylvania, without regard to any conflicts of law (or choice of law) principles thereof.

**14. CONSENT TO JURISDICTION**

In the event that either party initiates litigation relating to or arising out of this Agreement, Licensor and Licensee irrevocably submit to the exclusive jurisdiction of the state or federal court in or for Philadelphia, Pennsylvania for the purposes of any suit, action or other proceeding relating to arising out of this Agreement or any transaction contemplated hereby or thereby ("Legal Proceedings"). Licensee further agree that service of any process, summons, notice, or document by U.S. registered mail to such Party's respective address shall be effective service of process for any Legal Proceeding. Licensor and Licensee irrevocably and unconditionally waive any objection to personal jurisdiction and/or the laying of venue of any Legal Proceeding in the state or federal court in or for Philadelphia, Pennsylvania, and hereby further irrevocably and unconditionally agree not to plead, argue, or claim in any such court that any Legal Proceeding brought in any such court has been brought in an inconvenient forum and otherwise waive any and all objections to the forum.

**15. EXPORT CONTROLS**

Licensee shall not export or reexport, directly or indirectly, the Software without complying with the export controls imposed by the United States Export Administration Act of 1979, as amended (or any future U.S. export control

legislation) and the regulations promulgated thereunder.

#### 16. **GOVERNMENT END USERS**

If Licensee is acquiring the Software for or on behalf of a subdivision of the U.S. federal government, this Section 16 shall apply. The Software was developed completely at private expense, is existing computer software, is a trade secret for all purposes of the Freedom of Information Act, is “restricted computer software” and in all respects proprietary data belonging solely to Licensor, and all rights are reserved under the copyright laws of the United States. Use, duplication, or disclosure by the Government is subject to restricted rights as set forth in subparagraphs (a) through (d) of the Commercial Computer Software Restricted Rights clause at FAR 52.227-19, or for DoD units, the restrictions as set forth in subparagraph (c)(1)(ii) of the Rights in Technical Data and Computer Software clause at DFARS 252.227-7013.

#### 17. **TRADEMARKS**

Licensee agrees that SKF @ptitude Analyst, SKF @ptitude Inspector, SKF @ptitude Observer, SKF @ptitude Decision Support or any other software within the SKF @ptitude family suite and the trade dress, logos and other designations of source used by Licensor to identify the Software are trademarks or registered trademarks of Licensor. Licensee shall not use Licensor’s trademarks or service marks without the prior written consent of Licensor. If the Software contains any active links to web sites, you agree to maintain such active links and not redirect or modify them.

#### 18. **GENERAL PROVISIONS**

- (a) **Complete Agreement.** The Parties agree that this Agreement is the complete and exclusive statement of the agreement between the Parties, which supersedes and merges all prior proposals, understandings and all other agreements, oral or written, between the Parties relating to the use of the Software.
- (b) **Amendment.** This Agreement may not be modified, altered or amended except by written instrument duly executed by both Parties. Any purchase orders or other ordering documents issued to Licensee by Licensor shall not have the effect of amending or modifying this Agreement, and shall only serve to memorialize the number of licenses or products ordered by Licensee. In the event of a conflict between the PSP Policies and this Agreement, the terms of this Agreement shall control.
- (c) **Waiver.** The waiver or failure of either party to exercise in any respect any right provided for in this Agreement shall not be deemed a waiver of any further right under this Agreement.
- (d) **Severability.** If any provision of this Agreement is invalid, illegal or unenforceable under any applicable statute or rule of law, it is to that extent

to be deemed omitted. The remainder of the Agreement shall be valid and enforceable to the maximum extent possible.

- (e) **Read and Understood.** Each party acknowledges that it has read and understands this Agreement and agrees to be bound by its terms.
- (f) **Limitations Period.** No action arising under, or related to, this Agreement, may be brought by either party against the other more than two (2) years after the cause of action accrues, unless the cause of action involves death or personal injury.
- (g) **Attorneys' Fees.** In the event any litigation is brought by either party in connection with this Agreement, the prevailing party in such litigation will be entitled to recover from the other party all the costs, reasonable attorneys' fees, and other expenses incurred by such prevailing party in the litigation.
- (h) **Authorized Representative.** The person installing or using the Software on behalf of Licensee represents and warrants that he or she is legally authorized to bind Licensee and commit Licensee to the terms of this Agreement.
- (i) **Injunctive Relief.** Licensee agrees that Licensor may suffer irreparable harm as a result of a violation of Sections 2, 4, 6, 10, 15, and 17 of this Agreement and that monetary damages in such event would be substantial and inadequate to compensate Licensor. Consequently, Licensor shall be entitled to seek and obtain, in addition to such other monetary relief as may be recoverable at law or in equity, such injunctive other equitable relief as may be necessary to restrain any threatened, continuing, or further breach by Licensee without showing or proving actual damages sustained by Licensor and without posting a bond.

## Appendix B

# Configuration file and Command Line parameters

This appendix describes the contents of the Analyst Thin Client Transfer dBX (TCT dBX) configuration file (AnalystThinClientTransfer.DBX.exe.config) as well as available command line parameter options.

Parameter	Values	Description
TS_Address	Computer name or ###.###.###.### Default: 127.0.0.1	Computer name or TCP/IP address of computer running @ptitude Analyst Transaction Server
TS_Port	##### Default: 8088	Port ID that the @ptitude Analyst Transaction Server is configured to listen to
Last_Analyst_User	Analyst account name Default: null	@ptitude Analyst username last used to log into TCT dBX
Last_Analyst_Hierarchy_ID	#### Default: 1	Last @ptitude Analyst hierarchy opened in TCT dBX
Last_Analyst_Operator_Set	#### Default: null	Last @ptitude Analyst Operator Set sent down to the dBX
Last_TCT_Download_Option_Flags	# Default: 7	Last set of options sent down to the dBX 0 = all options off 1 = Force Spectrum Collection 2 = Download Spectrum Bands 3 = Bands + Spectrum 4 = Download FAM Information 5 = FAM + Spectrum 6 = FAM + Bands 7 = FAM + Bands + Spectrum

Parameter	Values	Description
Microlog_Comms_Tag_ID_Character	Character Default: ~ <tilde>	Character used to define RFID tag for @ptutde Analyst route machine. For example: “~123~” would configure an RFID tag id “123”
Microlog_Comms_Working_Directory	Windows Directory Default: C:\Temp	Directory where logs, download files and upload files are created
Microlog_Comms_Support_Device_Id_InMessages	True / False Default : false	If true, the device Id will be included in any Microlog Communication Library messages displayed. For USB comms, this value will always be 0, so the default is to suppress the value
Last_Transfer_Column_Selected	Column ID Default: 0	Number of the last selected Transfer Route List column ID (0 based).
Last_Transfer_Column_Sort_Order	0 = Ascending (least to most) 1= Descending (most to least) Default: 0	Order of sorting last selected for Transfer Route List column
Microlog_Comms_Retain_Incompatible_Point_Configuration	True / False Default : true	Setting to configure Microlog Comms Library to handle incompatible point types based on Microlog dBX version.
TS_Disable_Progress_Info	True / False Default : true	(*) Used as an interim solution for large Route configurations. Requires 9.0.3061.3 or higher patch to Transaction Server v9 MR3.

**Command Line Parameters**

The following command line parameters are supported:

Parameter	Values	Description
-dev	None	Starts TCT dBX in development mode with enhanced messaging and logging
-ts: <minus>ts<colon>	ComputerName,PortId Exampe: -ts:127.0.0.1,8088	Overrides the TS_Address and TS_Port configuration file parameters. Syntax is:

Parameter	Values	Description
		<b>&lt;minus&gt;ts&lt;colon&gt;Address&lt;comma&gt;Port</b>
-u: <minus>u<colon>	AnalystUserName,password	Overrides the Last_Analyst_User configuration file parameter and provides a password for use for verification. Syntax is: <b>&lt;minus&gt;u&lt;colon&gt;Username&lt;comma&gt;password</b>